

Tuesday 8th September 2020

Dear Woodberry Down Families,

Thank you again for your commitment and support with the drop off and collection of the children from school. We are getting there!

As a reminder, please see below the times at which your children should arrive at school and the times at which they can be collected. These times have not changed.

Morning Drop Off

8.45am
Year 2
Year 3
Year 4



8.55am
Year 1
Year 5
Year 6

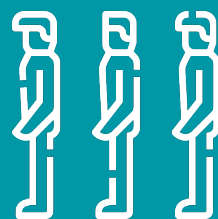


Afternoon Pick Up

3.20pm
Year 2
Year 3
Year 4



3.30pm
Year 1
Year 5
Year 6



These arrangements have been put into place to allow us to ensure your safety as well as our own.

We ask that you arrive at the time indicated above and not before.

We will not allow any parents who arrive early to collect their child until the stated time. **We ask that Year 1, Year 5 and Year 6 parents do not arrive in the afternoon until 3.30pm** so as to allow us to dismiss the first group safely. If you have a child in both Year 1 and Year 2, please arrive at 3.20pm.

When arriving to collect your child at the correct time, a queue should be formed at the correct gate. For Year 1 and Year 2 the correct gate continues to be Gate 1 for those pupils in KS2, please use Gate 2.

We ask that all parents **wear a mask** when entering the school grounds and follow the arrows for direction in and out of the school.

Kind regards, Mr Hewie